

Advances In Prosthodontics™

New Findings & Best Practices for Cosmetic & Restorative Dentistry

INSIDE THIS ISSUE

CASE SUMMARY:

Do You Have a Patient With This Situation?
(see photos on right)...
pages 1-2

DENTAL JOURNAL BRIEF:

Quickly Get the Latest Research on Procedures & Materials For Better Outcomes... **page 3**

HAVE A LAUGH:

Denture Dessert...
page 3

COMPLEX CASES:

Dr. Jacobs' Specialized Training & Skill Make These Treatments More Successful...
page 4

© Sams Media Group, LLC

Do You Have a Patient with Failing Restorations?



Here's the story of a patient who was referred from another dental professional...

If you have a patient with several missing, broken or severely worn teeth — or failing restorations — they may be a candidate for an oral rehabilitation with the assistance of an advanced Prosthodontist.

Read more on the next page...

◆ Do you want another opinion on a complex case? Or to talk and share ideas?

There are many ways we can help each other by working together on complex cases and by sharing knowledge and experience. With your reputation for quality dental care, and my experience with restorative treatments, we can work together on advanced cases and both benefit! If you'd like to discuss a treatment, or talk on the phone about how we can help each other, please call or email my office with specific days and times when you're available.

Prosthodontic Publication

Want to see recent issues?

Stay informed on new findings and best practices for cosmetic and restorative dentistry. See more examples of complex cases online at:

AdvancedProsthodontist.com
/ Jacobs

CASE SUMMARY: Maxillary Reconstruction

by Bryan Jacobs, DMD, MS, *Board Certified Prosthodontist*



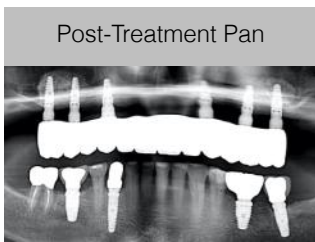
Patient “Lynn” was referred for collaborative care by an oral surgeon who saw her for a second opinion regarding her maxillary removable implant overdenture. Another provider had placed four maxillary implants, a bar with locator attachments, and made Lynn multiple versions of overdenture prostheses. These all were reportedly unstable and required numerous repairs after chipping. Lynn was beside herself after going through significant treatment and still not functioning. She was losing weight and experiencing symptoms of depression.

As a prosthodontist, I have experience with complex cases and coordinating with a patient’s general dentist and other specialists to achieve the best function and esthetics.

A comprehensive exam revealed buccally positioned implants with insufficient restorative space, poor angulation, and muco-gingival involvement. I thoroughly discussed treatment options with Lynn, to see if we could work with the existing implants. **This is the most difficult part of a case like this** — evaluating the costs and benefits of surgical re-treatment of osseointegrated (but prosthetically useless) implants, in a way that allows the patient to make an informed and healthy decision. Ultimately, together with Lynn, the decision was made to completely re-treat her case.

A collaborative plan was developed, together with her surgeon, to carry out the following:

- fabrication of an interim complete denture
- removal of the bar
- removal of the implants with ridge augmentation
- bilateral sinus lift procedures
- guided placement of six implants with immediate provisionalization
- fabrication of a definitive zirconia prosthesis after implant osseointegration



Post-Treatment Pan

This plan was carried out successfully and Lynn is thrilled with the result. The prosthesis is cleaned daily with brushing and an oral irrigator, and it is removed annually for hygiene access to the implants. A full coverage occlusal guard was fabricated to wear while sleeping.

I gave Lynn my full warranty and worked with her to schedule a healthy recall and maintenance routine.

If you have comments / questions about this example, please email me:
bryanjacobs@dentalprofessionals.com

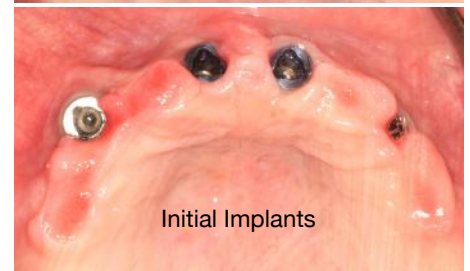
Initial Bar



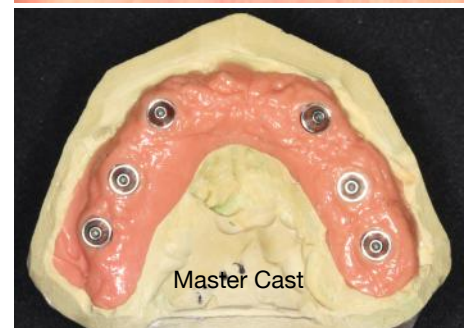
Initial Bar - Occlusal



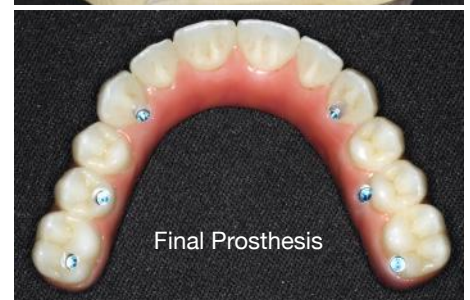
Initial Implants



Master Cast



Final Prosthesis



◆ Do you have a patient in Lynn’s situation? Or another complex case?

If you have a question about a case and want another opinion, give my office a call. Or, if there’s a case that you want to work together on, please fill out and send in the enclosed referral form.

My office and I will take great care of your patient and keep you informed. Dental professionals refer to me as **The Complex Case Specialist™** because I perform complex cases every day.

Quickly Get the Latest Research On Procedures & Materials For Better Outcomes...

Osseoperception in Dental Implants: A Systematic Review

Sunil Kumar Mishra MDS, Ramesh Chowdhary MDS, Bruno Ramos Chrcanovic DDS, MSc and Per-Ingvar Brånemark MD, PhD. Journal of Prosthodontics, DOI: 10.1111/jopr.12310

Purpose

Replacement of lost teeth has significant functional and psychosocial effects. The capability of osseointegrated dental implants to transmit a certain amount of sensibility is still unclear. The phenomenon of developing a certain amount of tactile sensibility through osseointegrated dental implants is called osseoperception. The aim of this article is to evaluate the available literature to find osseoperception associated with dental implants.

Materials and Methods

To identify suitable literature, an electronic search was performed using Medline and PubMed database. Articles published in English and articles whose abstract is available in English were included. The articles included in the review were based on osseoperception, tactile sensation, and neurophysiological mechanoreceptors in relation to dental implants. Articles on peri-implantitis and infection-related sensitivity were not included. Review articles without the original data were excluded, although references to potentially pertinent articles were noted for further follow-up. The phenomenon of osseoperception remains a matter of debate, so the search strategy mainly focused on articles on osseoperception and tactile sensibility of dental implants. This review presents the histological, neurophysiological, and psychophysical evidence of osseoperception and also the role of mechanoreceptors in osseoperception.

Results

The literature on osseoperception in dental implants is very scarce. The initial literature search resulted in 90 articles, of which 81 articles that fulfilled the inclusion criteria were included in this systematic review.

Conclusions

Patients restored with implant-supported prostheses reported improved tactile and motor function when compared with patients wearing complete dentures.

◆ Have A Laugh: Denture Dessert...

I hope I made you smile during your busy day!

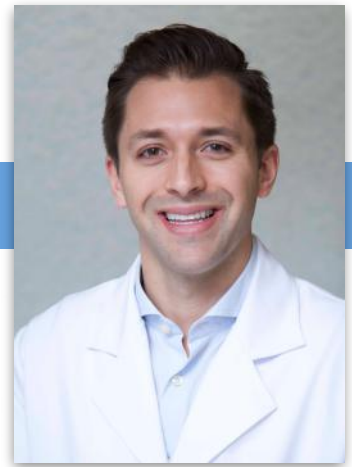
I take the care of patients referred to me very seriously, including knowing how to educate them so they feel comfortable.

It's my goal to help every patient understand even the most difficult procedures, so they can regain the function and esthetics they desire.



Dr. Bryan Jacobs

DMD, MS, Prosthodontist ♦ The Complex Case Specialist™



About Dr. Jacobs' specialization:

As a Prosthodontist, Dr. Bryan Jacobs specializes in fixed and removable prostheses, dental implants, and all phases of esthetic dentistry. Dr. Jacobs is Board Certified by the American Board of Prosthodontics. His training and experience make treatments of complex cases more successful, including the following examples:

- Patients with ill-fitting dentures, severely worn or damaged teeth can receive a single dental implant or a full arch of natural-looking teeth.
- Patients who have suffered from traumatic injury, congenitally missing teeth, or a chronic condition can receive oral prostheses, which may be a combination of dental implants, crowns, bridges, or veneers.
- Patients with severe neglect of their oral health can receive a full reconstruction to restore function and esthetics.

Dr. Bryan Jacobs practices prosthodontics at Dental Professionals in Chicago and Skokie, working with GP's and other dental specialists to restore the smiles and confidence of patients facing a difficult diagnosis.

Personal Message To Fellow Dental Practitioners:

"As the referring dentist, you know your patient's mouth and have key insight into your patient's needs. I want to work with you to provide your patients with the best possible treatment outcomes. I will treat your patient in a manner that will reflect well on you and strengthen your relationship with your patient. I am here to make you look good! When your patient's care is completed, they are referred back to your office for their ongoing dental care. I am grateful for your collegueship and trust with your patients!"

Dr. Jacobs' online referral form at: DentalProfessionals.com/referring-doctors

Protho Pledge

When your patient is referred:

- ✓ I will only treat what's been referred.
- ✓ I will send you updates.
- ✓ I will be part of your team, not take over your patients.

◆ Why other dental professionals work with a Board Certified Prosthodontist

Board Certified Prosthodontists are specialists in implant, esthetic, and reconstructive dentistry.

1. You have a patient requiring treatment outside your typical scope of practice.

Examples include patients with vertical dimension discrepancies, severely resorbed ridges, inadequate interarch space, severe bruxism, traumatic tooth loss, or congenital abnormalities.

2. You have a patient with complex needs that may drain your time.

If your patient may require treatment from several specialists, Board Certified Prosthodontists can help because they are trained to appropriately stage and manage complex treatment plans.

3. You have a demanding patient who wants perfect esthetics.

Examples include patients with a high smile line or needing a single tooth replacement in the esthetic zone. Board Certified Prosthodontists are trained in selecting the best solutions for high-demand patients.

4. You have a question and want to discuss a case with a colleague to ease your mind.

Board Certified Prosthodontists can be an excellent resource for you to ask questions because they are trained in many types of complicated treatments. For example, you may want to consult a Board Certified Prosthodontist for complex implant-supported restorations. They can work with you or complete the treatment for you to achieve the best in both function and esthetics.